

INDEX

Parts List..... 1

Tools and Supplies Required 2

Before You Begin

- Customer Information 2

Illustration of the Door Visors on the Vehicle 2

Installation

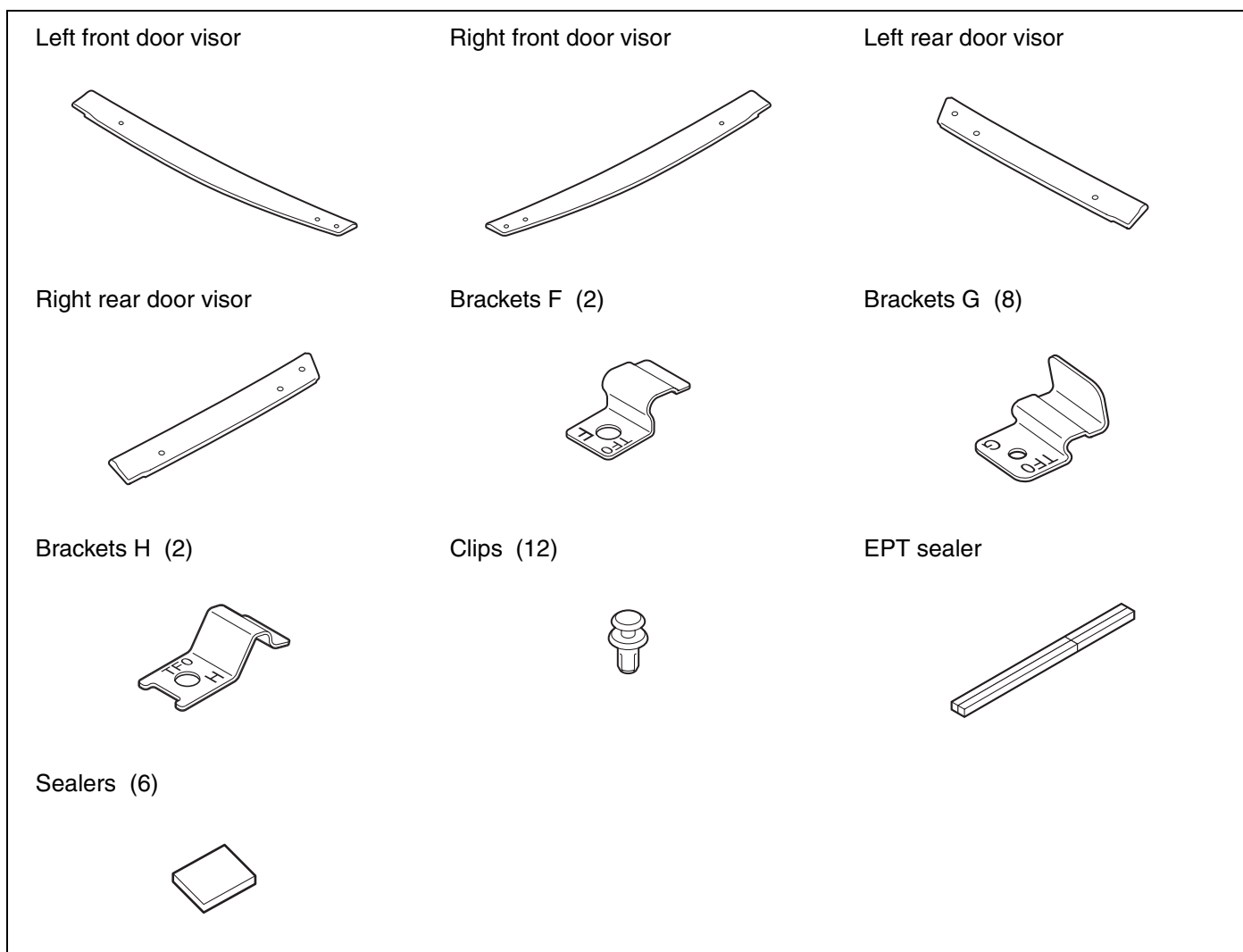
- Installing the Rear Door Visor..... 3
- Installing the Front Door Visor 12

Confirmation After Installation

- Restoration operations..... 16

Use and Care..... 16

Parts List



Tools and Supplies Required

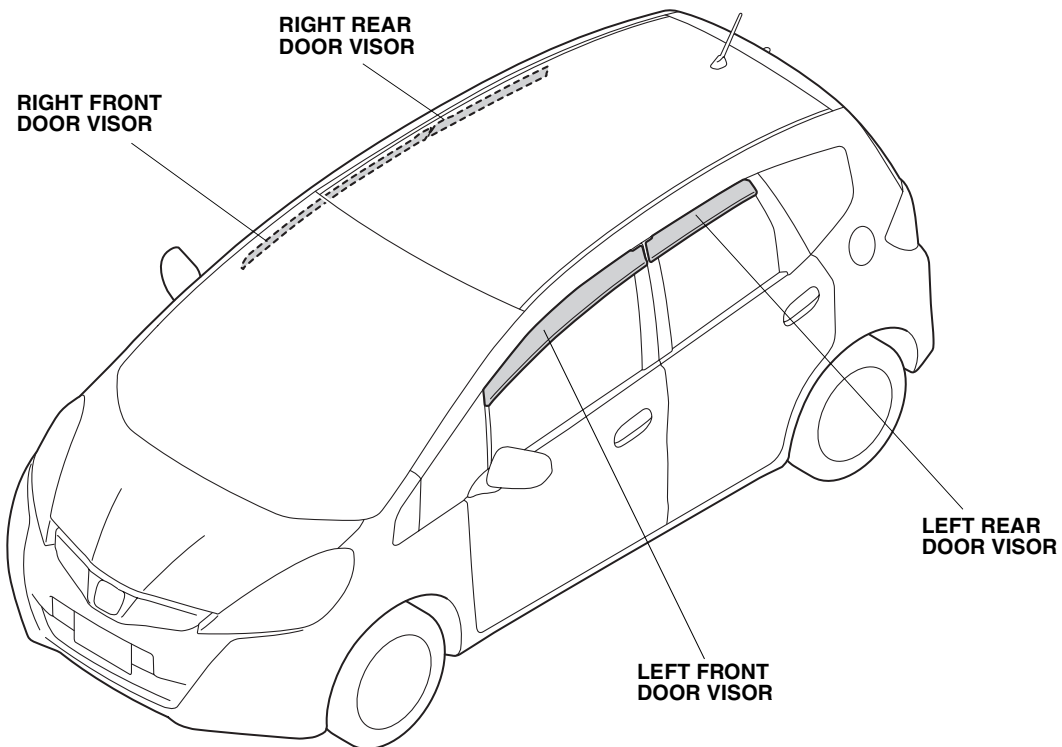
- Shop towel
- Masking tape
- Contact cleaner
- Scale

Before You Begin

Customer Information

- These installation instructions show the left door visors being installed. The same procedure applies to installing the right door visors.
- Do not damage the paint finish and run channels when installing the door visors.
- Handle the door visors with care. They are not designed to absorb shock or impact.
- Clean the surface thoroughly where the tape, etc. will attach using a shop towel dampened with the contact cleaner. Let the cleaned surface dry thoroughly before installation.
- This door visor kit should be installed only if the ambient air temperature is 15°C (60°F) or above.
- Install the part or double-sided adhesive tape properly at first try. Your attempt to detach the part or double-sided adhesive tape to correct the position can damage the part or deteriorate the bonding performance of the double-sided adhesive tape.
- To allow the adhesive to cure, do not wash the vehicle for 24 hours.

Illustration of the Door Visors on the Vehicle

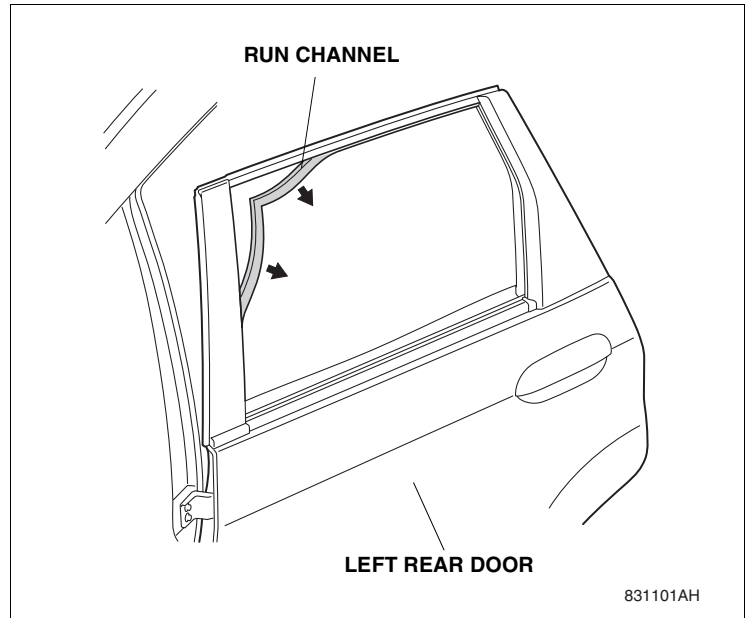


082501AJ

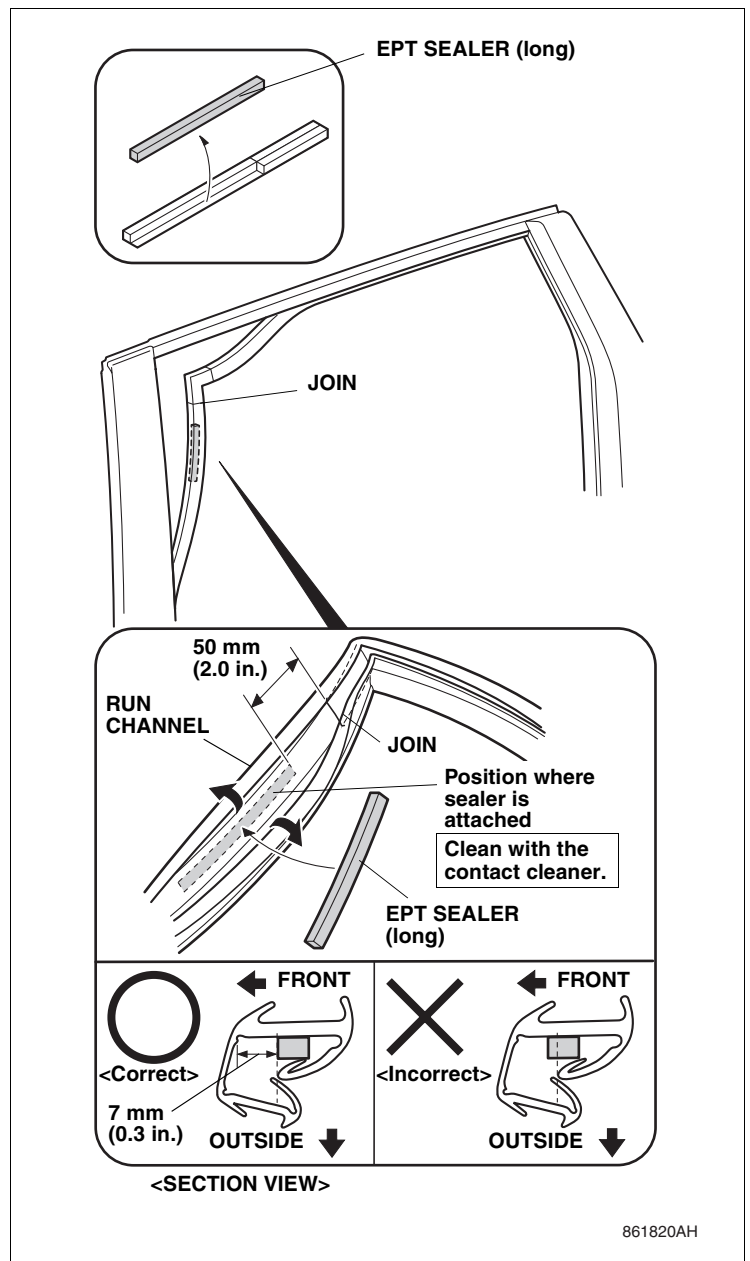
Installation

Installing the Rear Door Visor

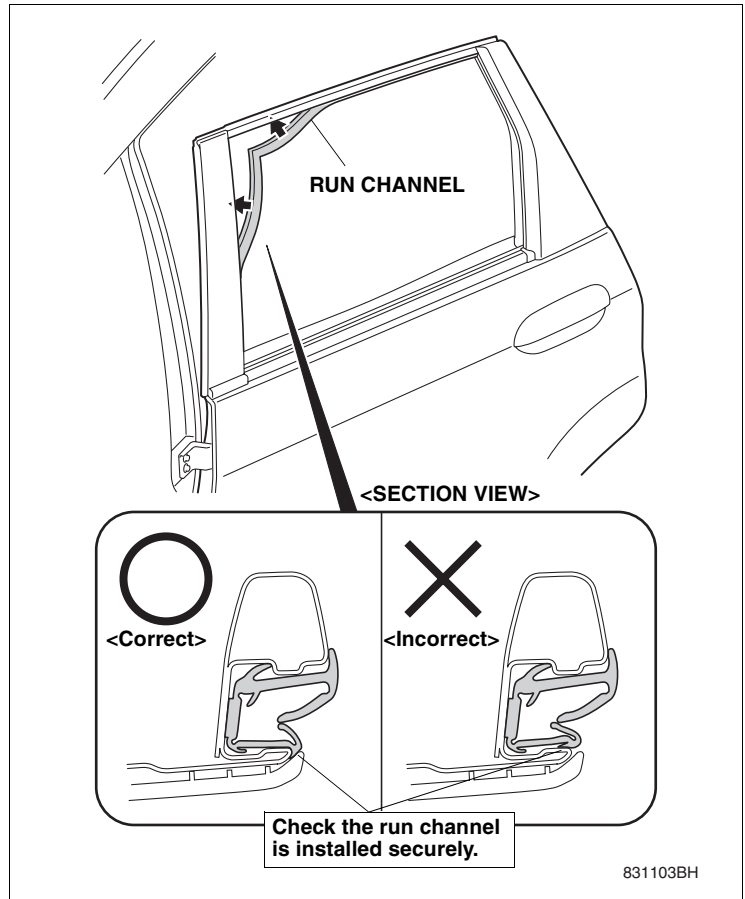
1. Fully open the left rear door glass.
2. Release the front side of the run channel.



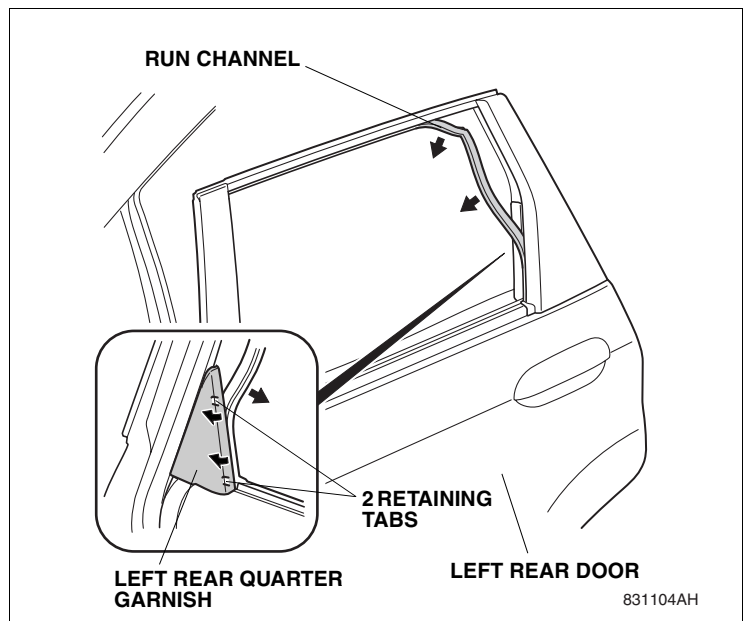
3. Open the run channel as shown, and measure its dimensions.
4. Using contact cleaner, clean the position where the EPT sealer (long) will attach.
5. Remove the EPT sealer (long) from the adhesive backing, and attach it as shown.
 - Check that the EPT sealer (long) is attached properly.



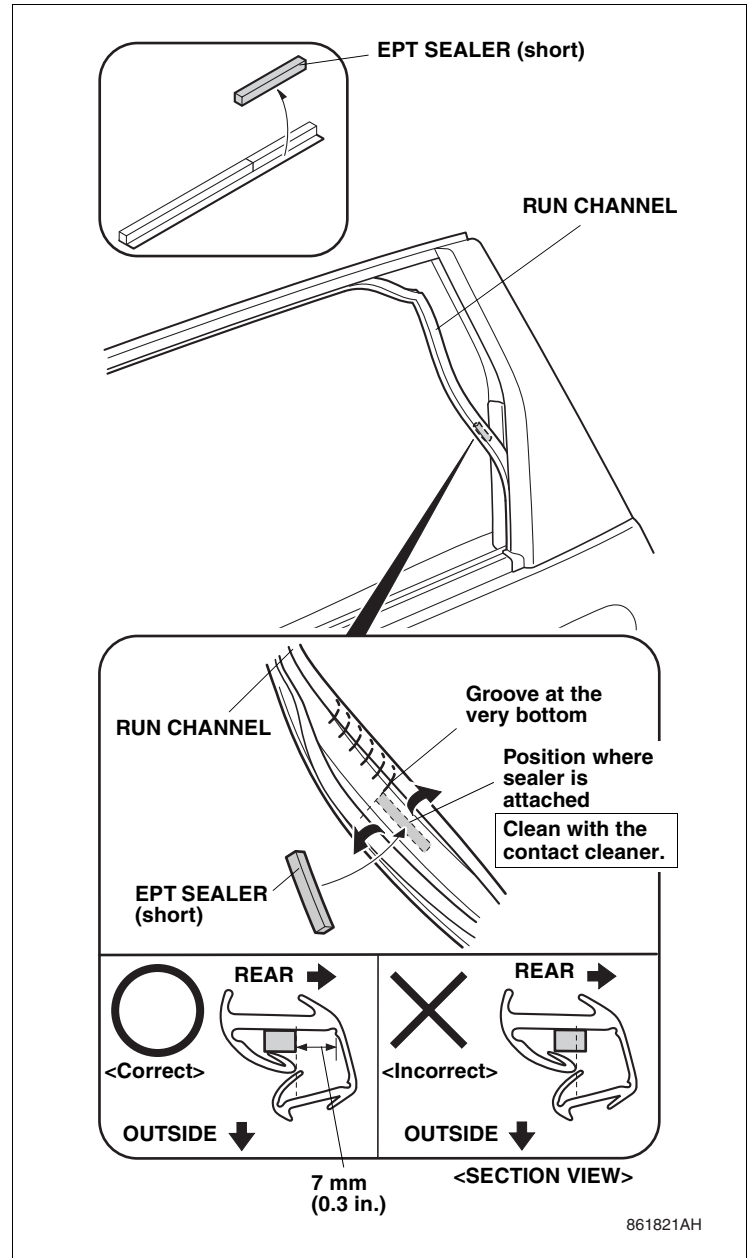
6. Reinstall the run channel.
 - Check that the run channel is installed securely.



7. Release the two retaining tabs, and slide the left rear quarter garnish out of its position.
 - Take care when sliding the left rear quarter garnish carefully it is easily damaged.
8. Release the rear side of the run channel.

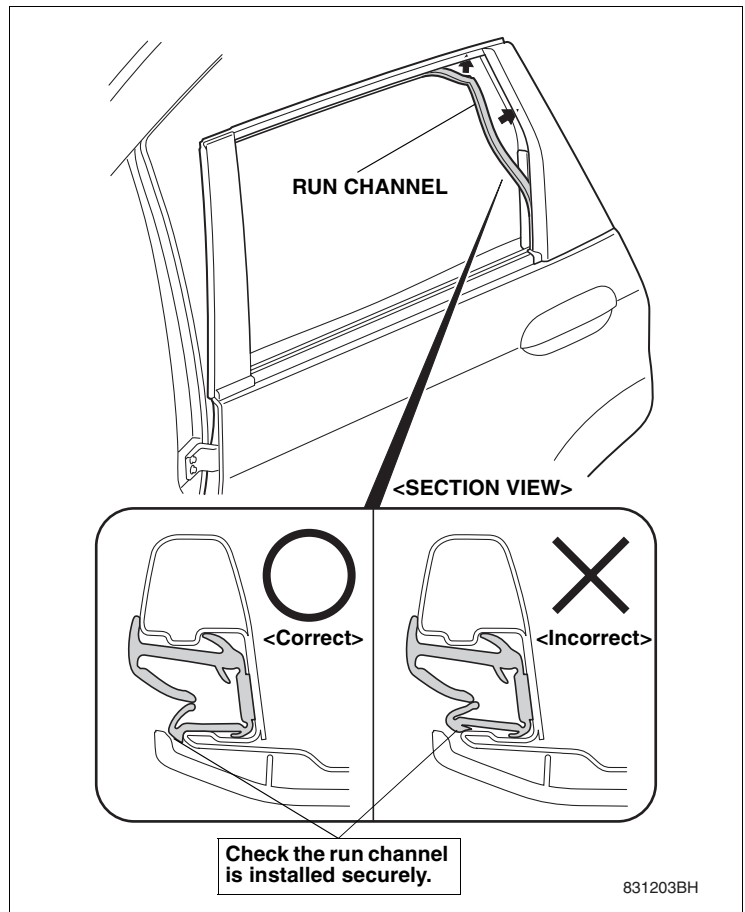


9. Open the run channel as shown.
10. Using contact cleaner, clean the position where the EPT sealer (short) will attach.
11. Remove the EPT sealer (short) from the adhesive backing, and attach it as shown.
 - Check that the EPT sealer (short) is attached properly.

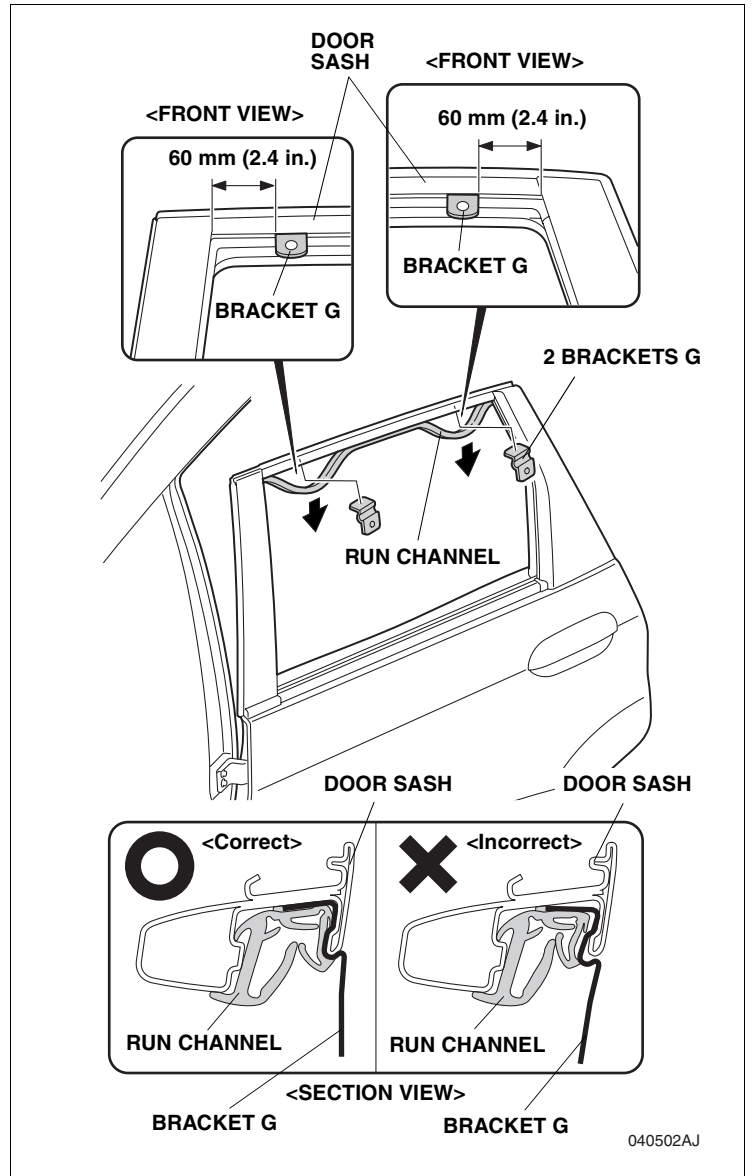


12. Reinstall the run channel and left rear quarter garnish.

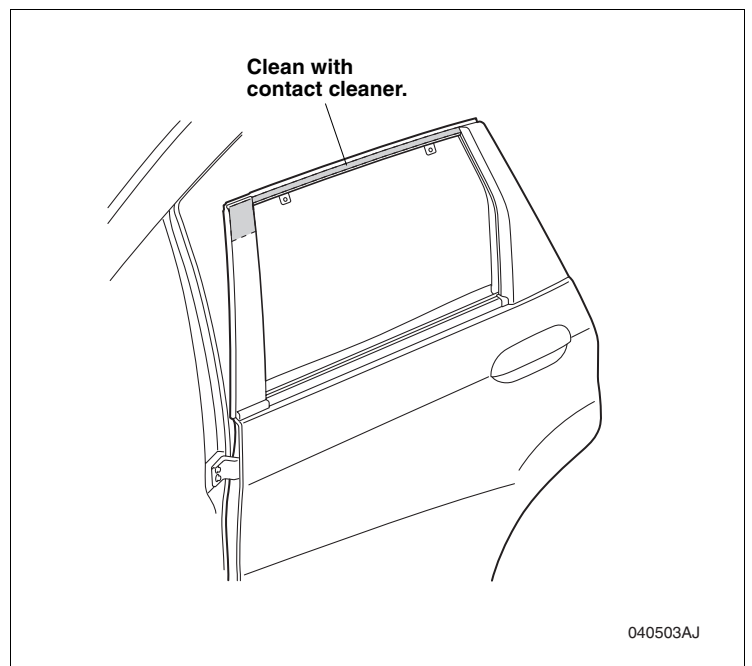
- Check that the run channel is installed securely.



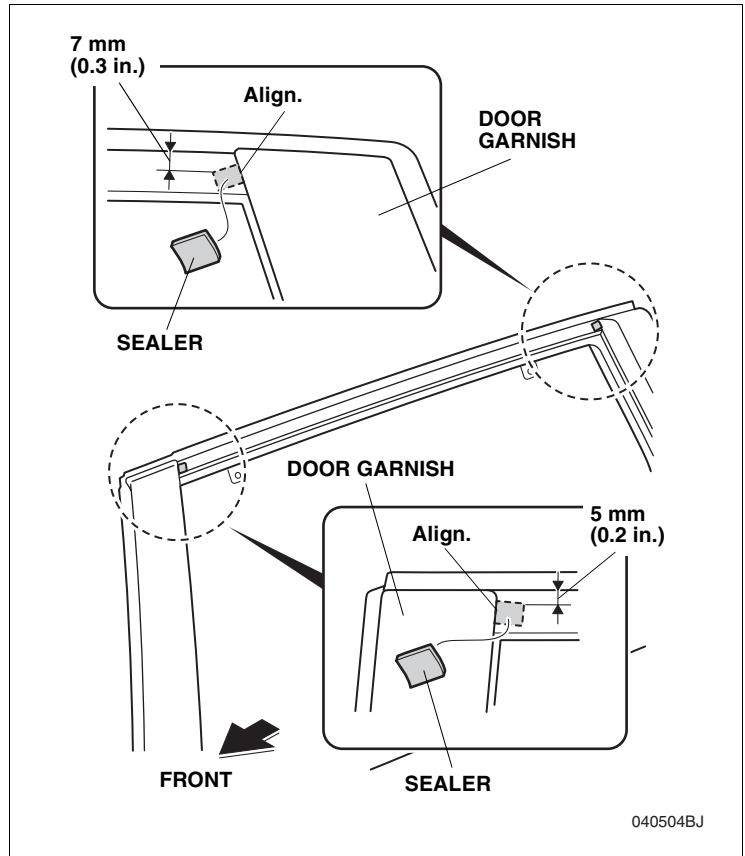
13. Release the run channel as shown.
14. Install two brackets G to the door sash as shown.
15. Reinstall the run channel.
 - Check that the run channel is installed securely.
 - Check that the brackets G are installed securely on the door sash as shown.



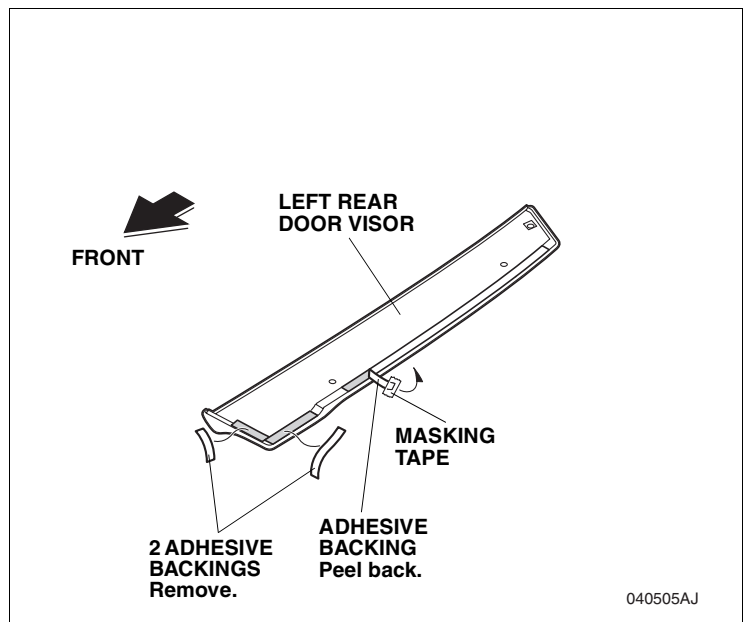
16. Using contact cleaner, clean the door sash where the left rear door visor will attach.



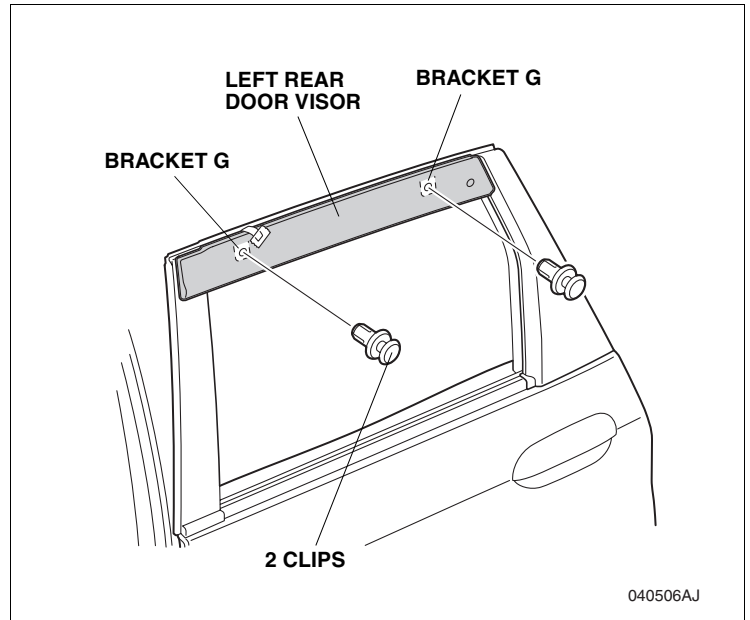
17. Remove the adhesive backing from each sealer, and attach them to the left rear door as shown.



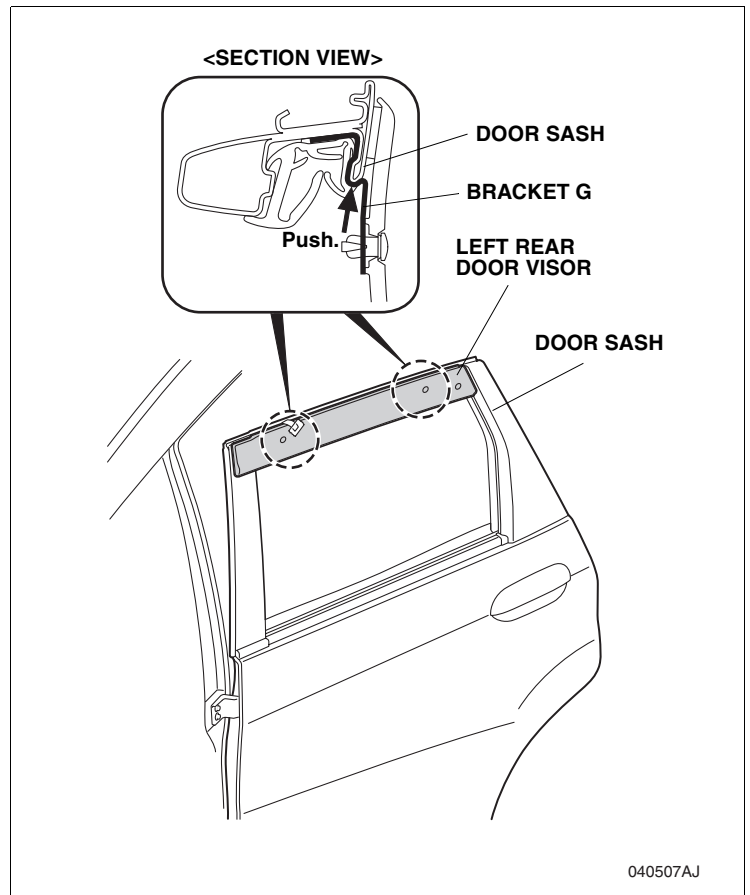
18. Attach the masking tape to an end of the adhesive backing of the left rear door visor. Peel back the adhesive backing partway and attach it to the surface side of the left rear door visor.
19. Remove two adhesive backings.



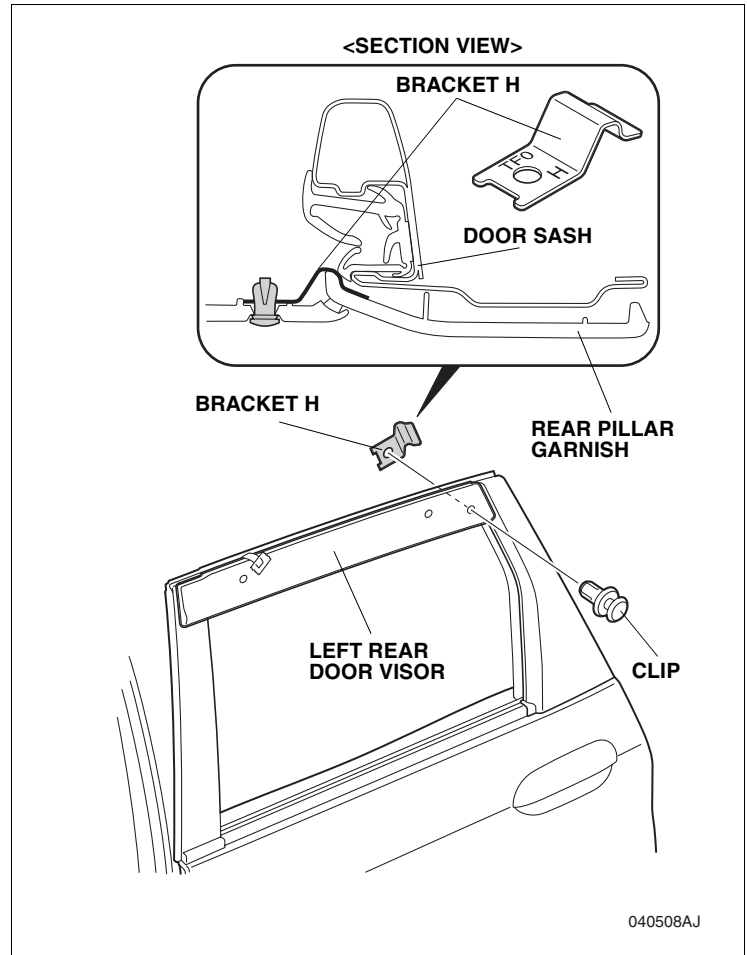
20. Secure the left rear door visor to two brackets G with two clips.
- Be extremely careful when installing the clip. Clip can not be removed and reinstalled after installation.



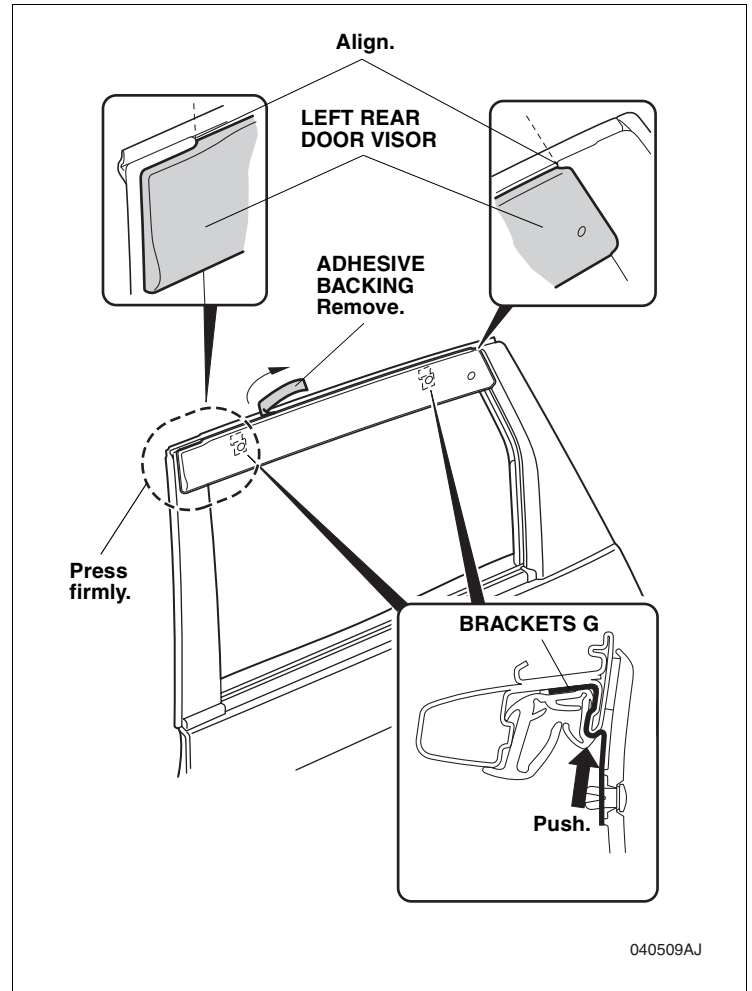
21. Push the left rear door visor that you just installed on the door sash upward, and check that it aligns with the contour of the door sash.
- Push the brackets firmly against the door sash so there is no gap between them.



22. Insert the bracket H between the rear pillar garnish and the door sash, and secure the left rear door visor to the bracket H with the clip.
- Be extremely careful when installing the clip. Clip can not be removed and reinstalled after installation.

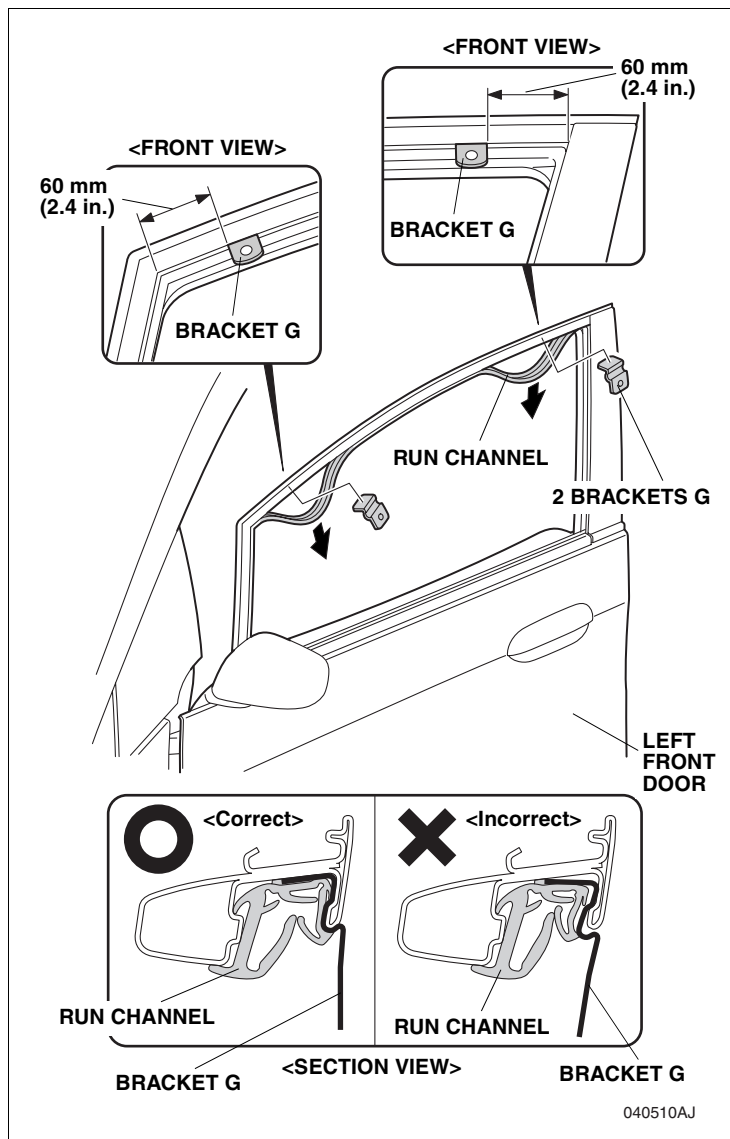


23. While removing the adhesive backing that temporarily attached to the surface side of the left rear door visor, press the left rear door visor firmly from the front side toward the rear.
- Remove the adhesive backing while pressing the left rear door visor in the direction of the arrow with your fingers so there is no gap between the brackets and the door sash.
24. Secure the left rear door visor by pressing it at the ends for 30 seconds.

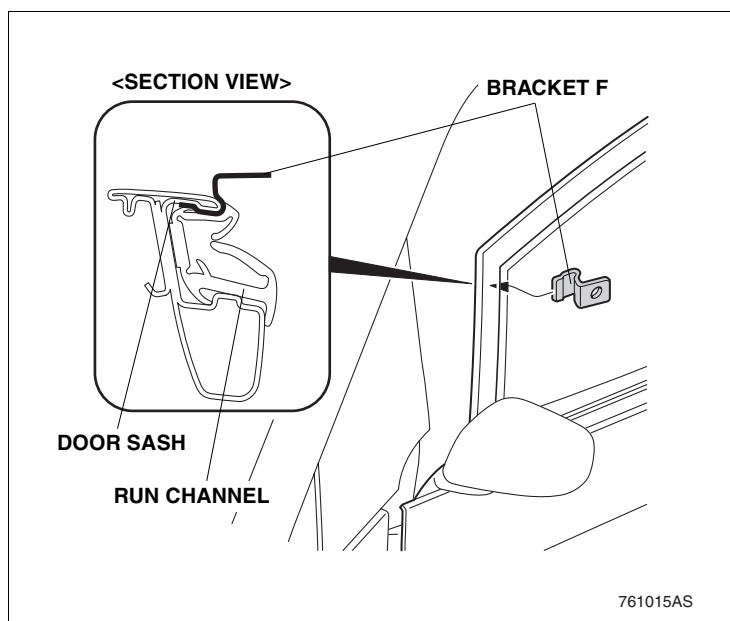


Installing the Front Door Visor

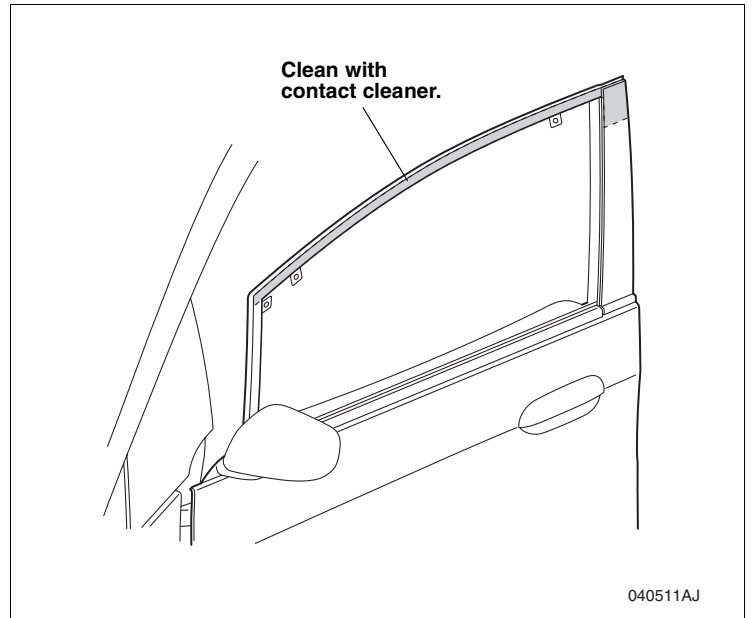
25. Fully open the left front door glass.
26. Release the run channel as shown.
27. Install two brackets G to the door sash as shown.
28. Reinstall the run channel.
 - Check that the run channel is installed securely.
 - Check that the brackets G are installed securely on the door sash as shown.



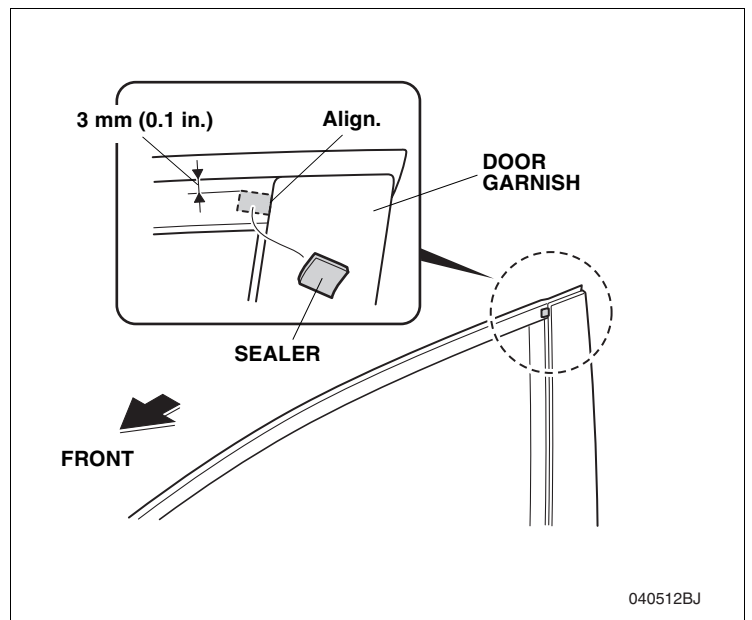
29. Install the bracket F between the door sash and the run channel in the position shown.



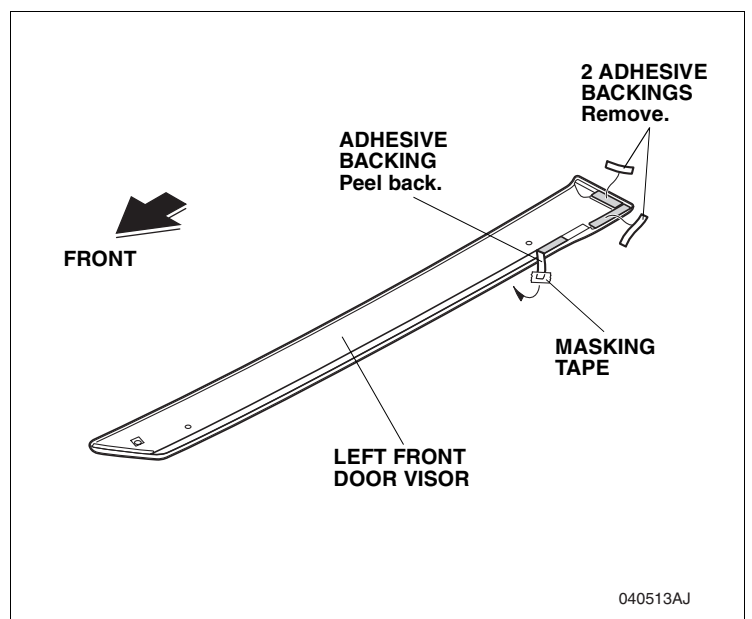
30. Using contact cleaner, clean the door sash where the left front door visor will attach.



31. Remove the adhesive backing from the sealer, and attach it to the left front door as shown.

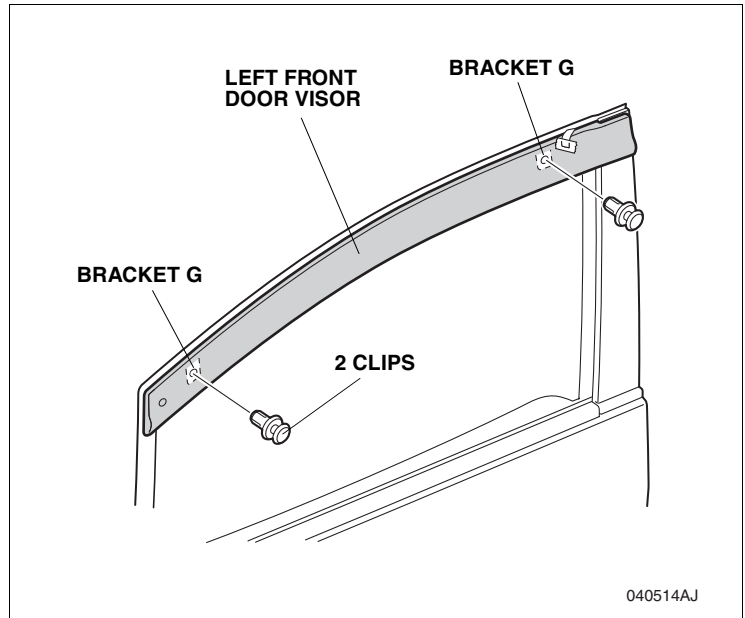


32. Attach the masking tape to an end of the adhesive backing of the left front door visor. Peel back the adhesive backing partway and attach it to the surface side of the left front door visor.
33. Remove two adhesive backings.



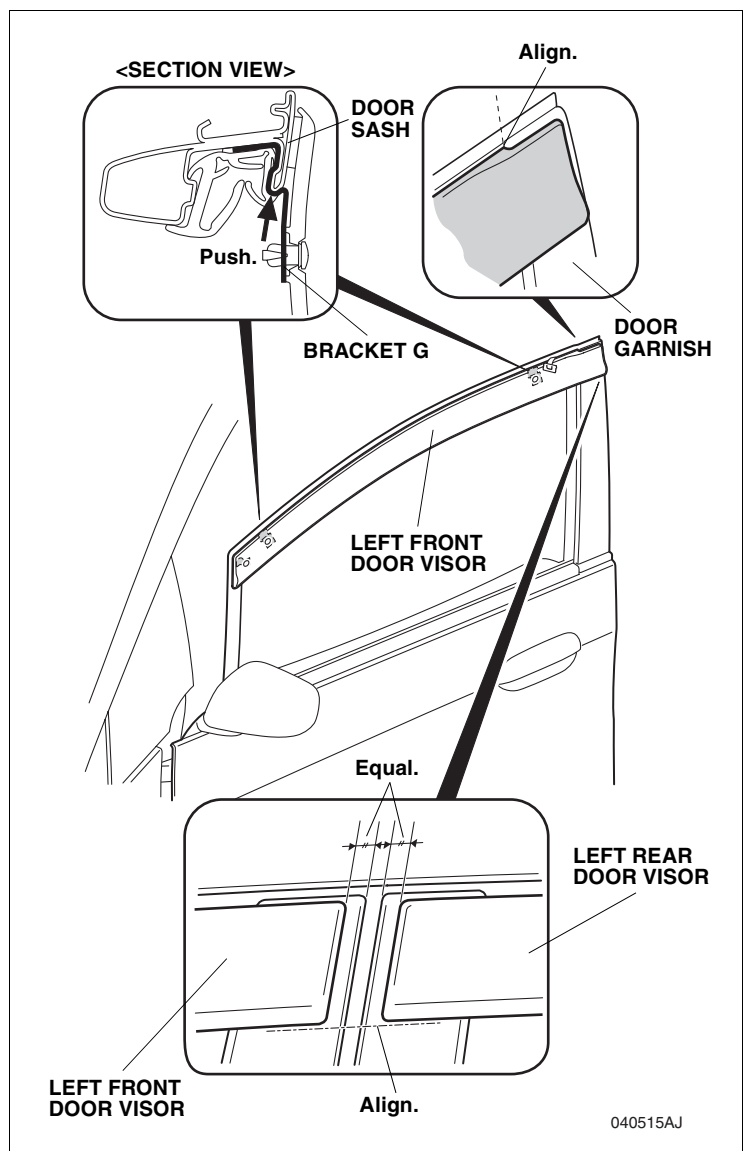
34. Secure the left front door visor to two brackets G with two clips.

- Be extremely careful when installing the clip. Clip can not be removed and reinstalled after installation.

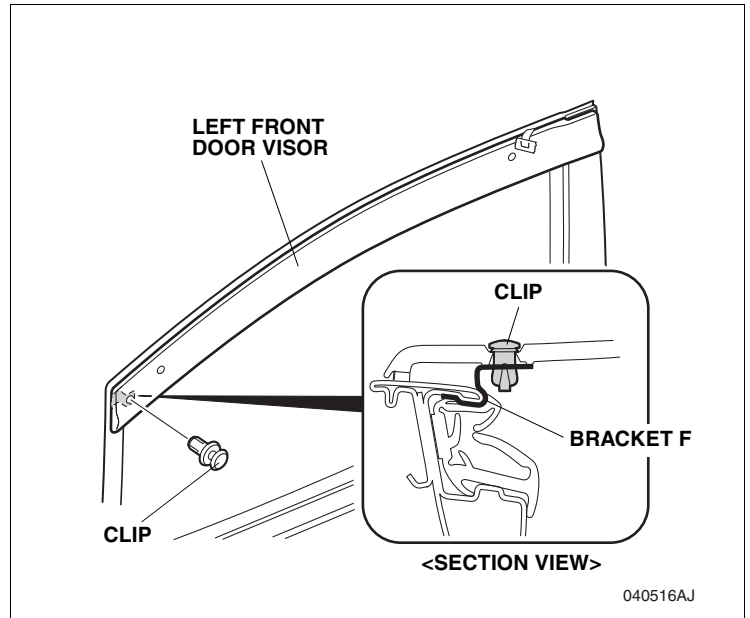


35. Push the left front door visor that you just installed on the door sash upward, and check that it aligns with the contour of the door garnish.

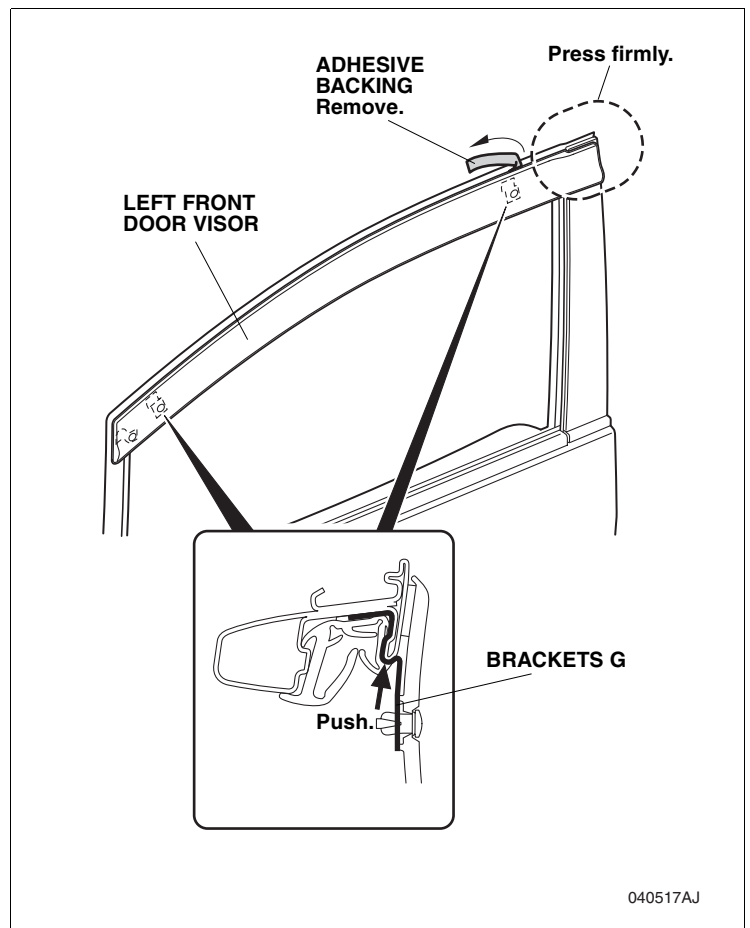
- Push the brackets firmly against the door sash so there is no gap between them.



36. Set the bracket F in the correct position by moving it up or down so the clip installation hole in the bracket F aligns with the clip installation hole in the left front door visor.
37. Secure the left front door visor to the bracket F with the clip.
 - Be extremely careful when installing the clip. Clip can not be removed and reinstalled after installation.



38. While removing the adhesive backing that temporarily attached to the surface side of the left front door visor, press the left front door visor firmly from the rear side toward the front.
 - Remove the adhesive backing while pressing the left front door visor in the direction of the arrow with your fingers so there is no gap between the brackets and the door sash.
39. Secure the left front door visor by pressing it at the ends for 30 seconds.
40. Repeat steps 1 through 39 on the right side of the vehicle.



Confirmation After Installation

Restoration operations

1. Start the engine.
 2. Using the power window switch, fully open the window, and check that there is no fault such as pinched run channel, etc.
 3. Using the power window switch, repeat opening and closing of the window from half-open to fully closed 4 or 5 times to allow the run channel to wear in. (Practice this operation while checking absence of a failure such as pinched run channel, etc.)
 4. Referring to the service manual of the vehicle, reset the power window. (If the automatic closing/opening does not function after the reset, reset again.)
 5. Referring to the service manual of the vehicle, carry out "learning" of the power window. (If the automatic closing/opening does not function after the learning, carry out "learning" again.)
- The operations in the steps 4 & 5 should be applied to all power windows having the automatic closing/opening function to allow for proper functioning of the anti-pinching function after installing the door visor.

Use and Care

- When the door visor is dirty, clean it with a soft cloth dampened with water.
- When the door visor is very dirty, clean the door visor with the neutral detergent and water. Do not use volatile solvent (e.g. thinner, benzine, alcohol, etc.) or a cleaner containing abrasive material.