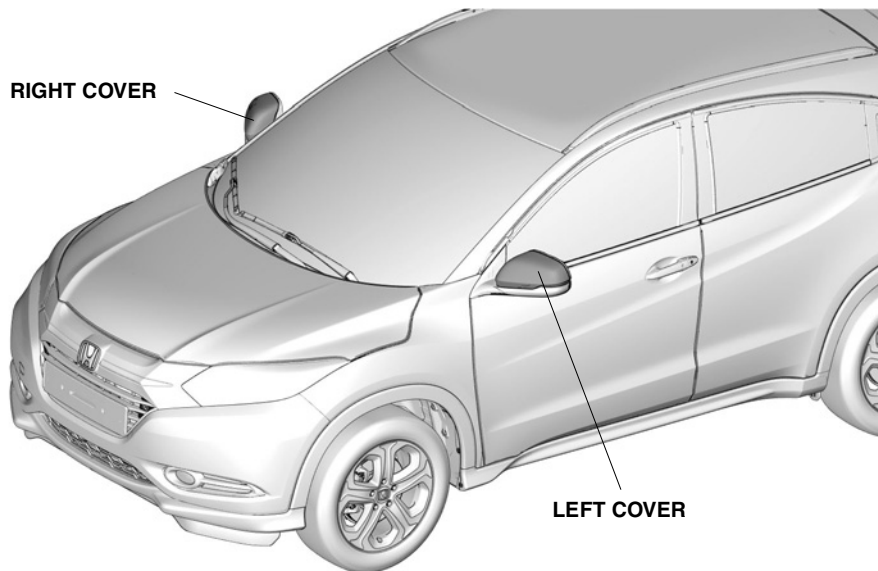


DOOR MIRROR COVERS

HR-V

GENERAL VIEW



QDN0413AJ

FOR YOUR SAFETY (Read carefully)

Introduction of Symbol Messages

- These symbols warn you about the possible hazards and explain how to avoid them. And give you some advices.

⚠ DANGER

You will be killed or seriously hurt if you do not follow the instructions.

⚠ WARNING

You can be killed or seriously hurt if you do not follow the instructions.

⚠ CAUTION

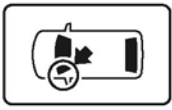
You can be hurt if you do not follow the instructions.

NOTICEGives advice to prevent damage to the product.
Gives helpful information or instructions to be followed in using the product.

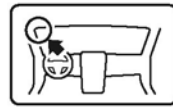
Indicates prohibited actions.

Introduction of Icons

- These icons indicate the working place and the worker's vision.



The place for the vehicle.



The place for the instrument panel.

- These icons indicate the necessary things for your safety and the work.



Wear eye protection.



Wear heavy gloves.



Work with an assistant.



Place the part on a blanket.



Remove any burrs.



Use the touch-up paint and dry.



Keep the parts and give it to the customer.
(Not use)



Press firmly.



Tighten by specified torque.

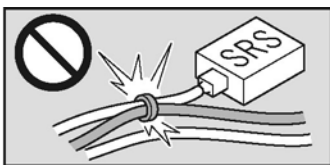


Work perpendicularly.

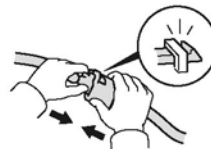


Clean with the contact cleaner.

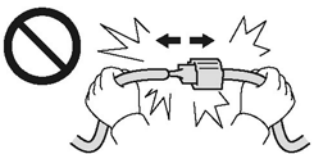
Wire Harness Routing Precaution



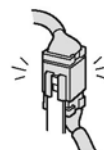
Do not clamp the accessory harness and SRS harness together.



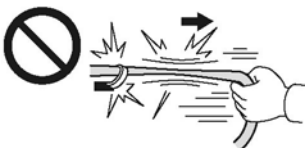
Connect the connectors and terminals securely until they lock.



Do not pull the harness to disconnect the connectors.



Reinstall the connectors to the original positions if they are removed.



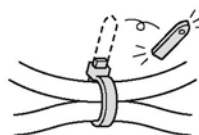
Do not pull the harness strongly.



Secure the accessory harness to the specified position, not to hang down.



Do not pinch the harness with the parts.



Cut off the excess of the wire ties.

Safety: General

- Observe all safety notes and precautions described in the Shop Manual in addition to those described in this Installation Instructions. Be extremely careful for your safety and safety of others particularly.
- Be careful not to damage the vehicle and the parts.
- Be extremely careful to the handling of the retaining tabs and clips particularly.
- Note the locations of the parts before removing them so that they can be reinstalled in their original positions properly.

Safety: For Electric Parts

- Do not perform the installation of the accessories with having connected negative cable of the battery.

PARTS LIST



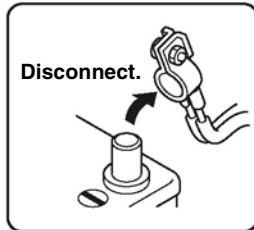
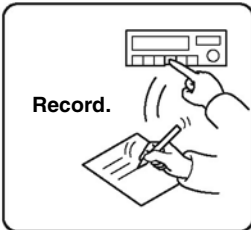
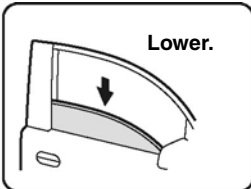
TOOLS AND SUPPLIES REQUIRED

- | | | |
|--|--|---|
| <ul style="list-style-type: none">• Flat-tip screwdriver• 10 mm Open end wrench | <ul style="list-style-type: none">• Tape• Ratchet | <ul style="list-style-type: none">• Shop towel• 10 mm Socket |
|--|--|---|

INSTALLATION

Disconnecting the Battery Cable

1. Perform the works before disconnecting the negative cable from the battery as shown below.
2. Make sure if you have the anti-theft code for the audio/navigation system. Record some settings of the vehicle if necessary.
3. Disconnect the negative cable from the battery.



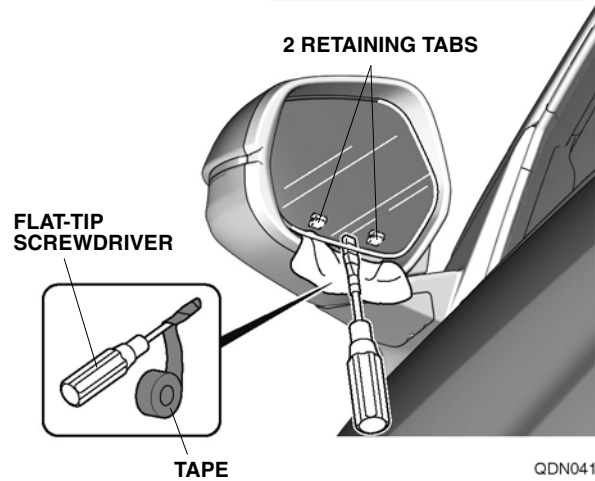
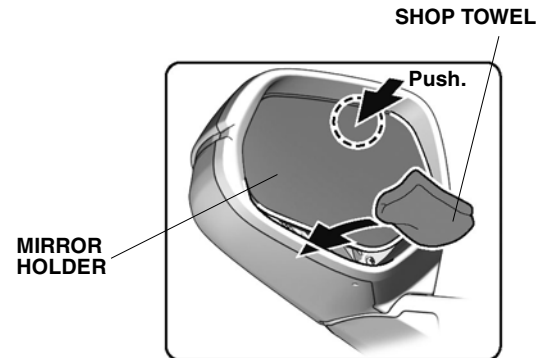
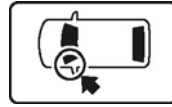
QCD0502BM

Removing the Vehicle Parts

4. Release the retaining tabs.

NOTICE

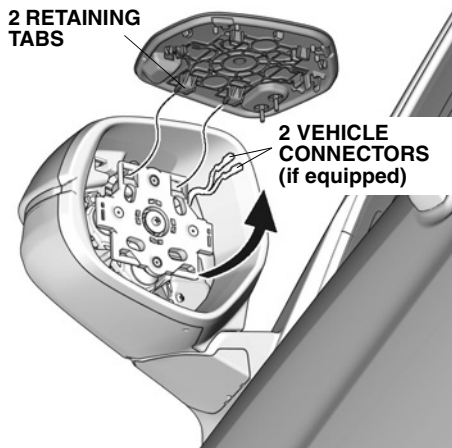
- Be careful not to damage the retaining tabs.



5. Remove the mirror holder.

NOTICE

- Make sure that there is no crack or no deformation on the mirror holder.

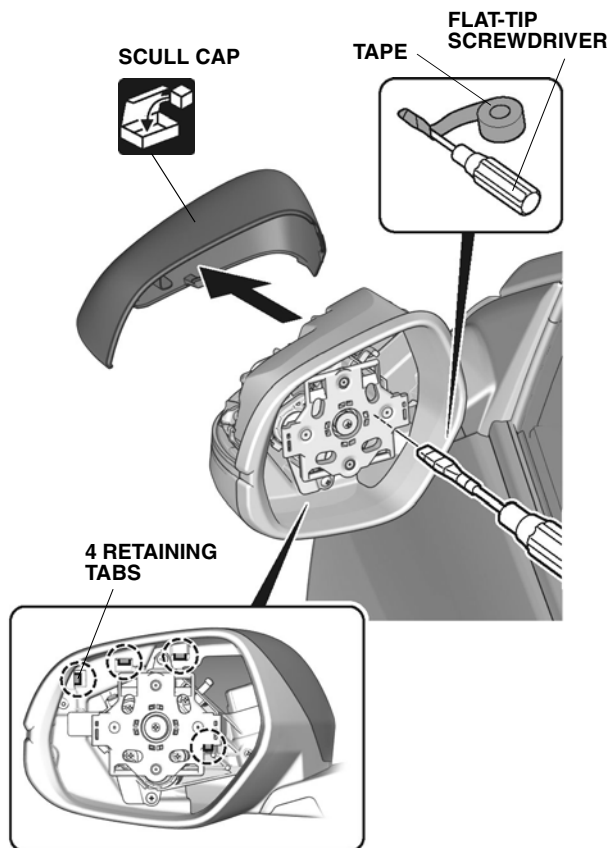


QDN0415AJ

6. Remove the skull cap.

NOTICE

- Be careful not to damage the retaining tabs.



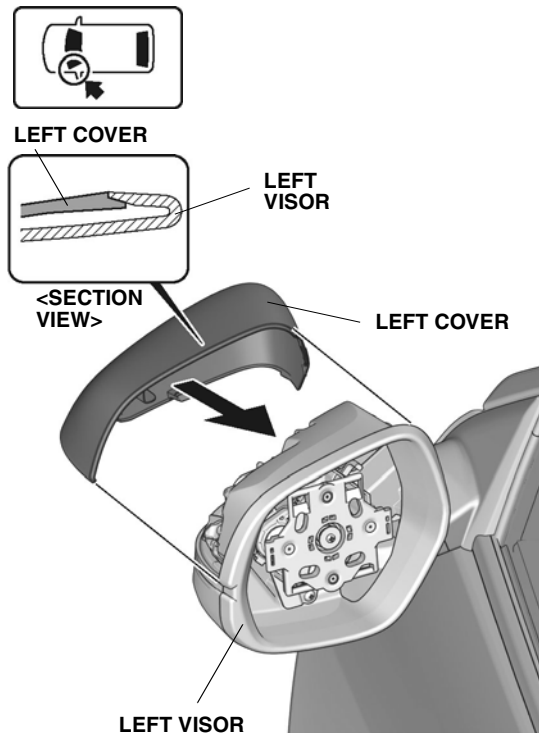
QDN0416AJ

Installing the Covers

7. Install the left cover.

NOTICE

- Make sure that there is no gap between the cover and the visor.
- Make sure to secure the retaining tabs properly.



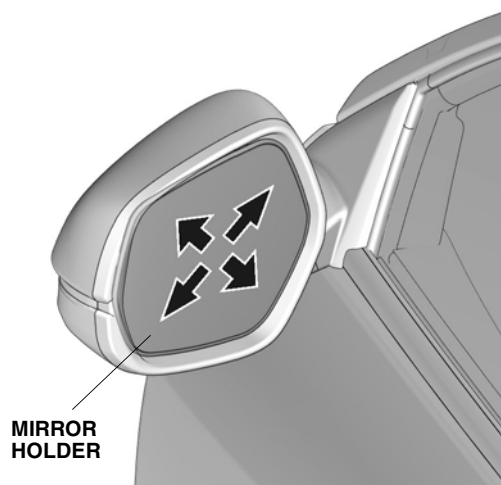
QDN0417AJ

8. Reinstall the mirror holder.

9. Check the mirror holder.

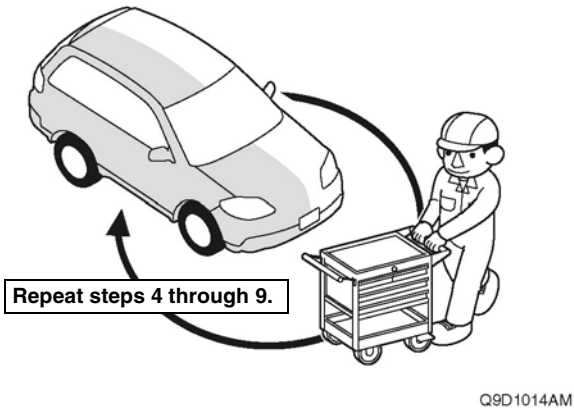
NOTICE

- Move the mirror holder in all directions to check if it is installed securely.



QDN0418AJ

10. Repeat same procedures for the other side.

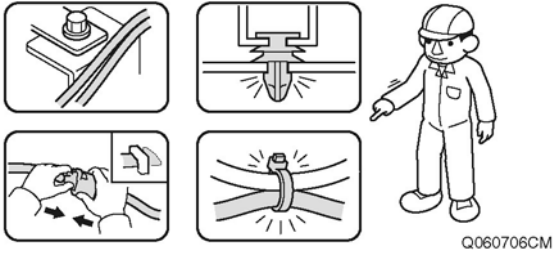


Check After Installation

11. Check that all parts are routed and installed properly.

NOTICE

- Check that the harnesses are not pushed, not pulled and not pinched.
- Check that all clamps and wire ties are installed securely.



Operation Check

12. Reconnect the negative cable to the battery.
13. Check that the turn signal, angle adjustment and movement of the mirror operate properly.

Vehicle Check

14. Check that the electric accessories and systems operate properly.
15. Press and hold the audio power button for two seconds, or enter anti-theft code for the audio/navigation system.
16. Reset the memory of each equipment and restore the positions of those control knobs.

